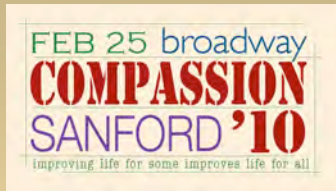


FEB 25 broadway
COMPASSION
SANFORD '10
 improving life for some improves life for all

a community roundtable to improve human services
 in lee county and unite those who provide them

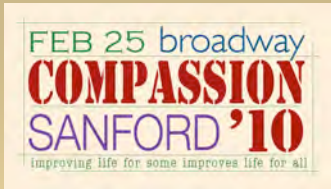


a community
 roundtable
 to improve
 human services
 in lee county
 and unite
 those who
 provide them



Why Are We Here? : The Plan

- **THE STATE OF COMPASSION '10.** Get a perspective on the "state of compassion" in our community with this annual overview.
- **HELPING YOUR CLIENTS AVOID DISASTER.** Help your clients avoid life-threatening mistakes in their home.
- **FOCUS '10: UNDERSTANDING POVERTY.** Learn how poverty affects how your clients learn, work, communicate and make decisions.
- **FOCUS '10: SETTING THE STAGE.** Meet others working on your issue and generate initial questions to be tackled in the coming weeks.
- **SOME FINAL WORDS.** Hear some final thoughts and announcements to wrap up this opening session.
- **FOCUS '10: KNOWLEDGE IN ACTION.** Meet with your working group in coming weeks to apply our new information to local problems.

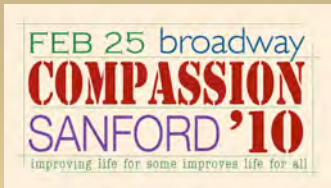


a community
 roundtable
 to improve
 human services
 in lee county
 and unite
 those who
 provide them



State of Compassion '10 : The Need

- **LEE COUNTY 211.** A free, statewide, multilingual information and referral service operating 24/7/365 to connect people in need with services in their community.
 - More than 973 connections were in Lee County during 2009. That's up significantly from 750 connections the year before.
 - Across North Carolina, 45 counties and about 73 percent of the population are served.
 - Corporate sponsors for Lee County 211: Capital Bank, Central Carolina Hospital, Coty, Frontier Spinning, Hanesbrands Inc., Life 103.1, Lori Baker and RBC Centura, Pentair Water Pool and Spa, Progress Energy, The Sanford Herald and WWGP-AM/WFJA-FM.

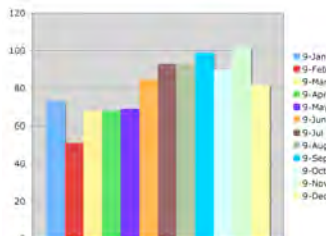


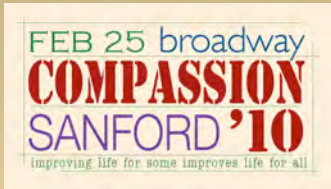
a community
 roundtable
 to improve
 human services
 in lee county
 and unite
 those who
 provide them



State of Compassion '10 : The Need

- **211 REQUESTS FOR HELP.** Since January 2008, 1,466 calls for help. On average, about 81 calls were received each month last year.
- **BUSIER SECOND HALF OF '09.** More requests came in the last six months of last year, with an average of 93 per month.





a community
 roundtable
 to improve
 human services
 in lee county
 and unite
 those who
 provide them



State of Compassion '10 : Requests

- **211 REQUESTS.** What assistance people are requesting statewide:
 - Financial, 35 percent of all needs
 - Physical or mental health, 13 percent
 - Housing or shelter, 8 percent
 - Food, 7 percent
 - Other basic subsistence, 13 percent
 - Other (including legal, consumer and educational), 23 percent



a community
 roundtable
 to improve
 human services
 in lee county
 and unite
 those who
 provide them

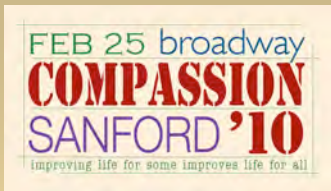


State of Compassion '10 : Facts

- **137.** Local organizations providing assistance for our neighbors, based on the "Lee 211 Directory".
- **408.** Cancer patients transported to medical appointments by Highway to Healing in 2008.
- **10.** Adults living at t.l.c. home, a residential facility originally designed for children and young adults.
- **26,000.** Meals purchased and packaged by volunteers in Sanford then shipped overseas by Stop Hunger Now to feed hungry people.

More coming soon from *UW This Year '09*, the United Way of Lee County's annual report.





a community
roundtable
to improve
human services
in lee county
and unite
those who
provide them

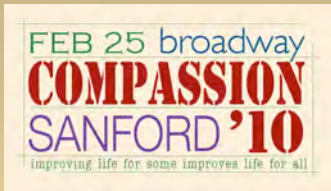


COMPASSION '10

A QUICK NOTE: HELPING YOUR CLIENTS AVOID DISASTER

Shane Seagroves
Lee County Emergency Management

When local firefighters entered a burning home recently, they discovered a propane gas cylinder standing in one room — in a fire, that's something akin to a ticking, 20-pound bomb. Help your clients avoid life-threatening disasters by learning what common, potentially-fatal mistakes they should avoid.



a community
roundtable
to improve
human services
in lee county
and unite
those who
provide them

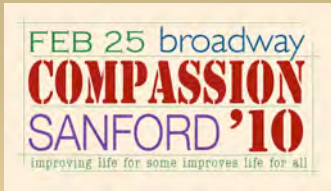


COMPASSION '10

FOCUS '10: UNDERSTANDING POVERTY

Susan Pennock
Communities In Schools of North Carolina

You may be helping neighbors in poverty, but do you truly understand them and what they're facing? Learn how economic class affects the way people learn, work, communicate and even make decisions. Sort out important differences between "generational poverty" and "situational poverty," and discover how your organization must treat the groups differently to become more effective. Learn how to interpret "hidden rules" that differ among social classes and how to find individual strengths that could help people pull themselves out of poverty.



a community
roundtable
to improve
human services
in lee county
and unite
those who
provide them

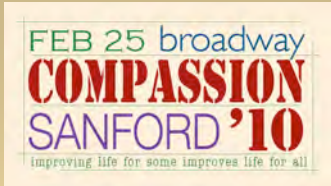


COMPASSION '10

FOCUS '10: SETTING THE STAGE

Susan Pennock
Communities In Schools of North Carolina

Members of working groups on food, employment, financial help, dropout prevention and housing meet briefly to introduce themselves and begin generating questions to tackle in follow-up sessions over the coming weeks. Each group will generate a list of initial questions, which will be returned to roundtable organizers. Lists will be compiled after the session and published, with copies being sent to Susan Pennock and all roundtable participants.



a community
roundtable
to improve
human services
in lee county
and unite
those who
provide them

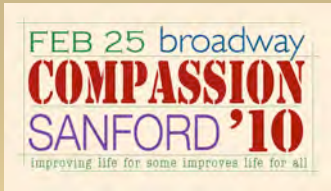


COMPASSION '10

SOME FINAL WORDS

Jan Hayes
United Way of Lee County

Here are some final thoughts and announcements to wrap up this opening session of COMPASSION '10. If you have an announcement of interest for the group, get it ready and keep it short, because you have just 30 seconds to make your splash! And we can only go until 5 p.m.



a community
roundtable
to improve
human services
in lee county
and unite
those who
provide them



COMPASSION '10

FOCUS '10: KNOWLEDGE IN ACTION

Susan Pennock
Communities In Schools of North Carolina

Today is just the beginning! Susan Pennock will return in coming months to help Lee County organizations put their new understanding of poverty into practice. She'll meet individually with working groups to learn exactly what challenges our local nonprofits face and then how the information on poverty can help local families. Susan will begin sessions with questions developed by working groups at today's opening session.