

MAY 14 sanford
COMPASSION
BROADWAY '09
improving life for some improves life for all

a community roundtable to improve human services
in lee county and unite those who provide them

MAY 14 sanford
COMPASSION
BROADWAY '09
improving life for some improves life for all



a community
roundtable
to improve
human services
in lee county
and unite
those who
provide them



Why Are We Here?

- About 137 Lee County businesses or nonprofits assist our neighbors in need (see the Lee County 211 directory!).
- Many are working on the same problems, but we don't always know who's doing what.
- Compassion '09 gives us a chance to meet each other, learn what everyone is doing and find ways to be more effective.
- EXAMPLE: PROVIDING PEOPLE WITH FOOD.

MAY 14 sanford
COMPASSION
BROADWAY '09
 improving life for some improves life for all



COMMUNITY
 ROUNDABLE
 TO IMPROVE
 HUMAN SERVICES
 IN LEE COUNTY
 AND UNITE
 THOSE WHO
 PROVIDE THEM



Why Are We Here? : Food Example

- **Ministries and agencies involved:** Abundant Life Ministries Food Pantry, Angel Food Ministries, The Breadbasket, Christian Faith Ministries, Christian Youth Fellowship Council, Christians United Outreach Center of Lee County, Hillview Christian Assembly, Meals on Wheels of Sanford, True Apostolic Church Feeding Program and many churches in our community.
- **What they do:** Deliver meals or food (2 groups), distribute free groceries on site (4), prepare hot meals eaten on site (3), provide reduced-cost groceries (1). Plus, what individual churches are doing.
- **Question:** How can we coordinate our effort to be more effective and serve people better?

MAY 14 sanford
COMPASSION
BROADWAY '09
 improving life for some improves life for all



a community
 roundtable
 to improve
 human services
 in lee county
 and unite
 those who
 provide them



Why Are We Here? : The Plan

- **FOCUS '09: RESPONDING TO AN EMERGENCY.** Roger Millikin, Lee County Emergency Services Support.
- **BRAC: THE IMPACT OF THOUSANDS MORE.** Tim Moore, Program Manager, BRAC Regional Task Force.
- **Break.** Meet your colleagues before getting down to work.
- **STRATEGY '09: MEETING OUR PRESSING NEEDS.** Breakout strategy sessions to find better solutions.
- **FINDINGS '09: A BLUEPRINT FOR ACTION.** A summary of your recommendations for our top issues..

MAY 14 sanford
COMPASSION
BROADWAY '09
 improving life for some improves life for all



COMMUNITY
 CONNECTION
 CAREERS
 COMMUNITY
 COMMUNITY
 COMMUNITY
 COMMUNITY
 COMMUNITY



State of Compassion '09 : The Need

- **LEE COUNTY 211.** A free, statewide, multilingual information and referral service operating 24/7/365 to connect people in need with services in their community.
 - More than 750 connections were in Lee County during 2008.
 - Across North Carolina, 34 counties and about 62.5 percent of the population are served.
 - Corporate sponsors for Lee County 211: Capital Bank, Central Carolina Hospital, Coty, Frontier Spinning, Hanesbrands Inc., Life 103.1, Lori Baker and RBC Centura, Pentair Water Pool and Spa, Progress Energy, The Sanford Herald and WWGP-AM/WFJA-FM.

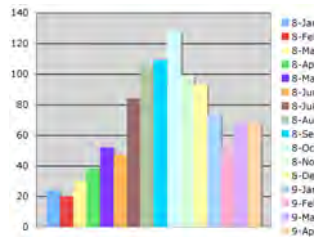


a community
 roundtable
 to improve
 human services
 in lee county
 and unite
 those who
 provide them



State of Compassion '09 : The Need

- **211 REQUESTS FOR HELP.** Since January 2008, 753 calls for help. This year so far, 260 calls received (or 65 per month).
- **TWICE AS MANY CALLS THIS YEAR.** This year, NC 211 received 260 calls from January through April. Last year, that number was 112.



MAY 14 sanford
COMPASSION
BROADWAY '09
 improving life for some improves life for all

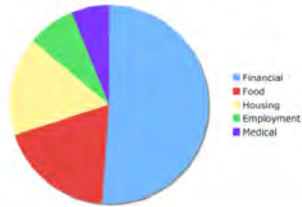


COMMUNITY
 COMMUNITY
 COMMUNITY
 COMMUNITY
 COMMUNITY
 COMMUNITY
 COMMUNITY
 COMMUNITY



State of Compassion '09 : Requests

- **211 REQUESTS.** What help people are requesting from 211:
 - Financial Assistance, 51 percent of all calls
 - Food, 19 percent
 - Housing or shelter assistance, 16 percent
 - Employment or job training, 8 percent
 - Medical treatment, 6 percent



a community
 roundtable
 to improve
 human services
 in lee county
 and unite
 those who
 provide them



State of Compassion '09 : Need Up

- **SALVATION ARMY ANGEL TREE.** Arranged Christmas gifts for 800 children in December, double the requests from one year before.
- **CHRISTIANS UNITED OUTREACH CENTER.** Households receiving food from the pantry has increased from 6,094 in 2006 to 7,903 in 2007 and 9,751 in 2008.
- **CCCC FINANCIAL AID.** The number of Pell Grants awarded to needy students rose by 9.7 percent last year and the amount actually disbursed to enrolled students was up \$560,401.
- **THE BREADBASKET.** Since July, over the last eight months alone, the number of meals served has increased by 35 percent.

MAY 14 sanford
COMPASSION
BROADWAY '09
 improving life for some improves life for all



- 1. COMMUNITY
- 2. NEEDS
- 3. COMMUNITY
- 4. COMMUNITY
- 5. COMMUNITY
- 6. COMMUNITY



State of Compassion '09 : Top Needs

Top local needs, based on feedback from roundtable registrants.

1. EMPLOYMENT ASSISTANCE
2. HOUSING AND SHELTER
3. (tie) MEALS AND FOOD
3. (tie) MEDICAL CARE
5. FINANCIAL ASSISTANCE AND COUNSELING
6. EDUCATIONAL SUPPORT AND DROPOUT PREVENTION

MAY 14 sanford
COMPASSION
BROADWAY '09
 improving life for some improves life for all



a community
 roundtable
 to improve
 human services
 in lee county
 and unite
 those who
 provide them



State of Compassion '09 : Facts

- 886. Number of people assisted in one year by HAVEN of Lee County after being a victim of domestic violence or sexual assault.
- \$312. Donation required for the Christians United Outreach Center to provide a weeks' worth of food for 312 Lee County families.
- 10-12. Number of nonperishable items sent home on Friday for needy students by Backpack Pals so they can eat on weekends.
- \$12,000. Downpayment Brick Capital Community Development Corp. helped arrange so Precious Sie-Duke could finally own a home.

Facts from *UW This Year '08*, the United Way of Lee County's annual report.

